

## COLUMN PURGING PROCEDURE



## SAFETY INFORMATION:

**PRECAUTION:** Always wear safety glasses and gloves when working with solvent.

## PROCEDURE:

**Items Needed:** A.  $\frac{1}{4}$ " Tubing with Swagelok Union

B.  $\frac{1}{4}$ " Swagelok Cap

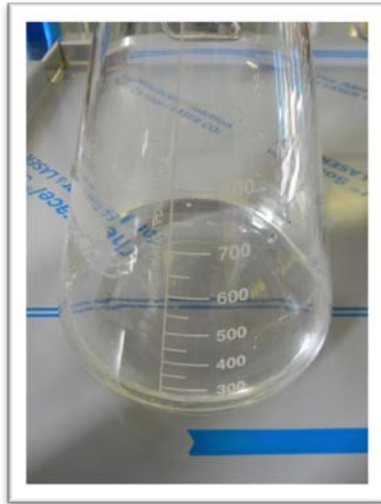
C. Erlenmeyer Flask

D.  $\frac{9}{16}$ " Wrench

E. 1" Wrench



1. Fill an Erlenmeyer Flask with 150 mL of water



2. Close the Top Column Valve (Colored Valve)



3. Disconnect the SS Tubing at the Final Filter



4. Attach the Union and ¼ Tubing to the SS line from the Column

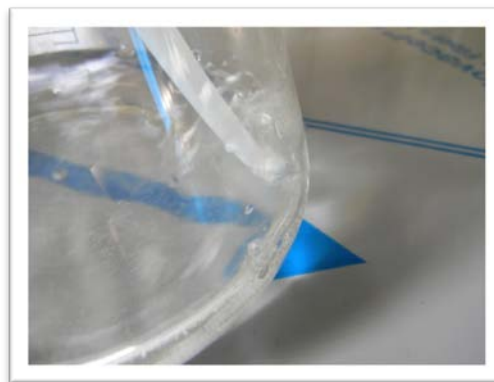


5. Insert the end of the tubing into the Erlenmeyer flask, submerging the tubing in water



6. Slowly open the Top Column Valve.

**Note:** You want to see a gentle bubbling in the flask



7. Purge the column until solvent starts coming out into the beaker
8. Close the Top Column Valve



9. Reattach and tighten the SS line to the Final Filter

