

SYSTEM SPECIFICATIONS

PERFORMANCE

RO Production Rate	1.25 GPM
Recovery Rate	70%
RO Reject Rate	95% - 97%
Water Quality	RO Water
Conductivity	10-40 $\mu\text{s/cm}$ (based on inlet $<750 \mu\text{s/cm}$)
TOC, Sodium, Chlorides, and Total Silica - Performance based on inlet concentration. Contact PPT for evaluation.	

FEEDWATER REQUIREMENTS

Hardness	$<150 \text{ ppm}$
Total Chlorine	0.5 ppm max
Silica	$<30 \text{ ppm}$
Temperature	1-30 $^{\circ}\text{C}$

Please ensure feedwater meets the specifications. PPT offers a range of options should it be necessary. Consult the factory with questions.

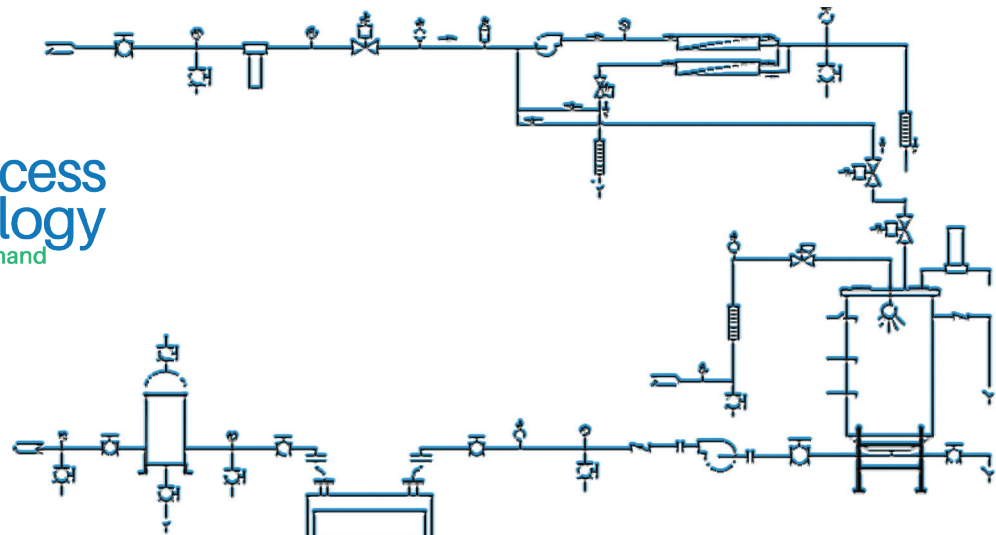
FEATURES

Piping Pre-RO	SCH80 PVC
Piping Post RO	PPL Socket Fusion
Storage Tank	250 Gal. 0.2 μ Filter, Spray Ball, Overflow
Distribution Pump	12 GPM @ 50PSI (Max 600' Loop)
UV	254nm, Monitor, Intensity
Final Filter	Multi-Cartridge, SS, 0.2 μ Filter
Conductivity	Loop Out & Loop Return
Return Piping	Flowmeter, BPR & Gauge

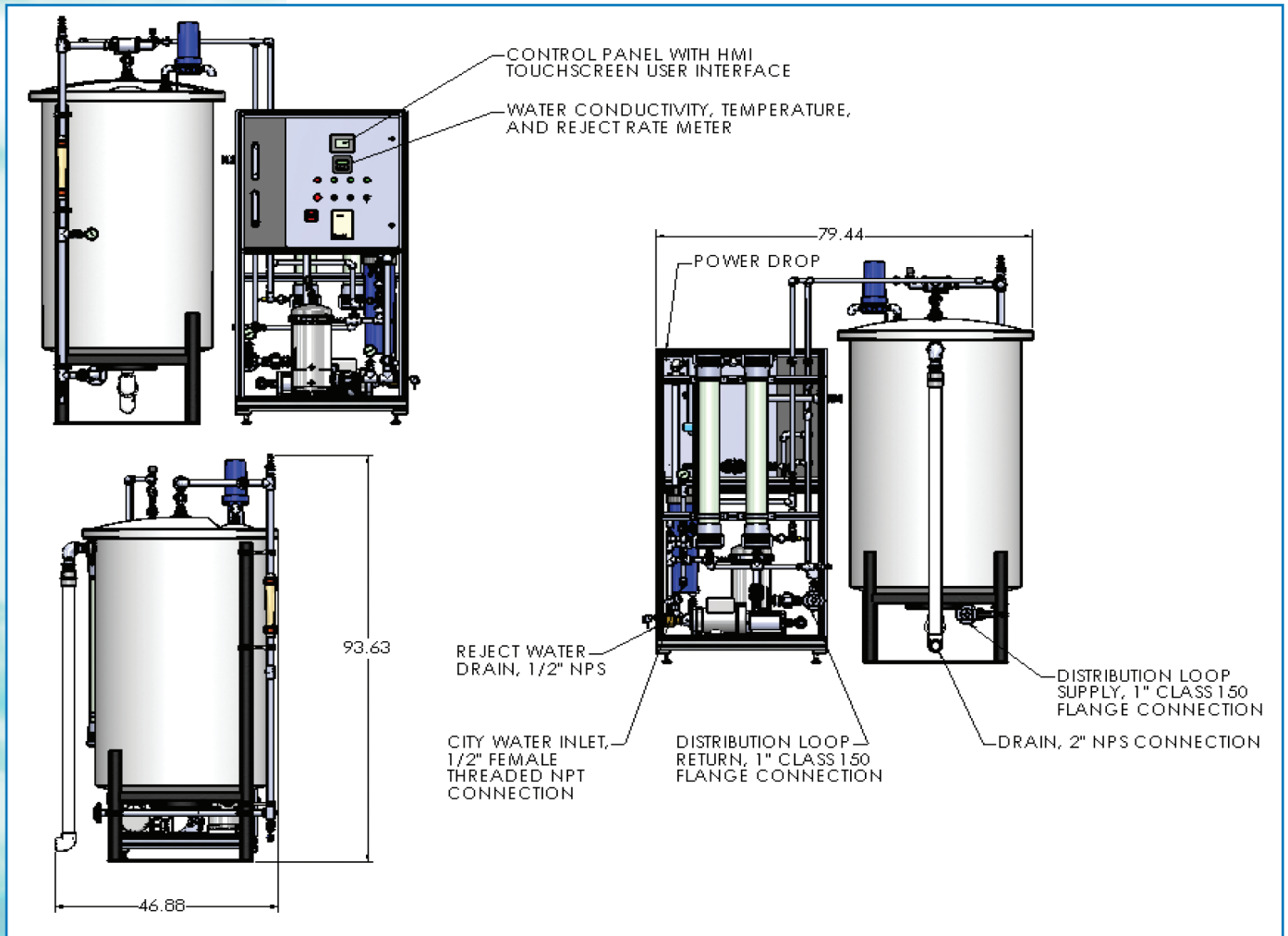


BENEFITS INCLUDE

- PLC/HMI Controls (UL listed panel)
- Structural Aluminum Skid Frame
- Hard Piping - No Inferior connections
- High Recovery / Reject Rates
- Small Footprint
- Easy Installation



QuickLab 275 - System Specification



UTILITY REQUIREMENTS

City Water Flow	4 GPM
City Water Pressure	30-60 PSI
Power	480 3p, 15A
Inlet Connection	1/2" NPT
Drain Connection	1 1/2" NPT
Supply Loop Connection	32mm (1") PPL Socket Fusion
Return Loop Connection	32mm (1") PPL Socket Fusion
Installed Footprint	8'W x 4'D x 7'H

quicklab₂₇₅

Pure Process Technology

25 Front St., Suite 303, Nashua, NH 03064
603.598.0691 www.pureprocesstechnology.com